

# The Bay



ALL ELEVATIONS INCLUDE 549 SQ.FT OF FINISHED BASEMENT



Elevation A 2260 sq.ft  
Elevation B 2253 sq.ft  
Elevation C 2253 sq.ft



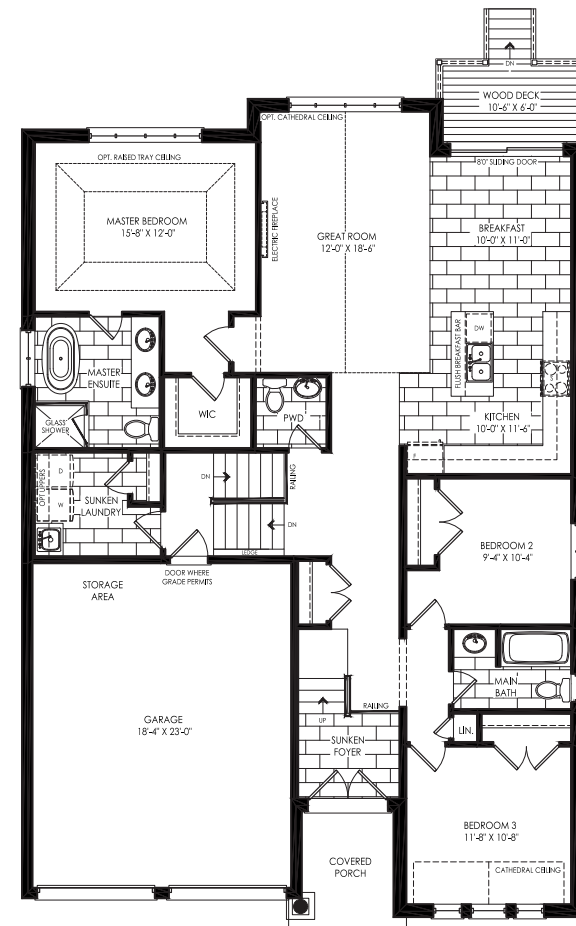
# The Bay

Elevation A 2260 sq.ft

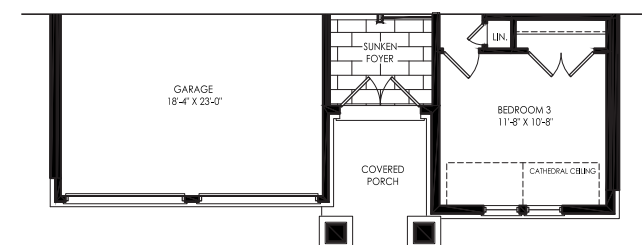
Elevation B 2253 sq.ft

Elevation C 2253 sq.ft

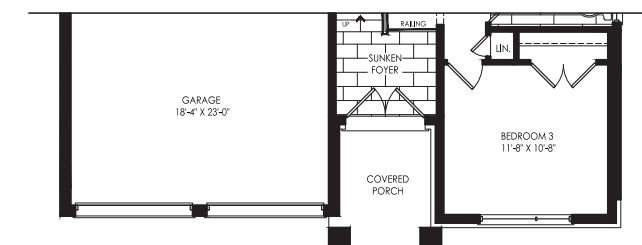
ALL ELEVATIONS INCLUDE 549 SQ.FT  
OF FINISHED BASEMENT



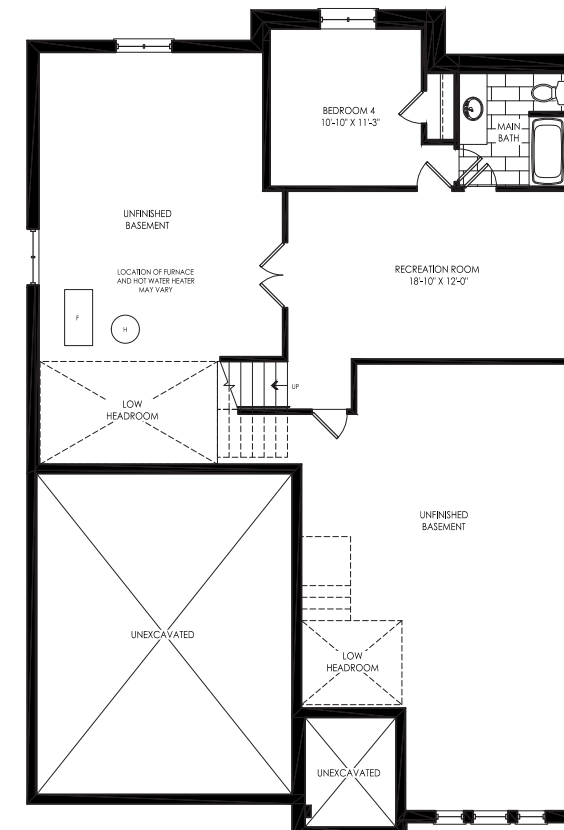
Elevation A  
Ground Floor



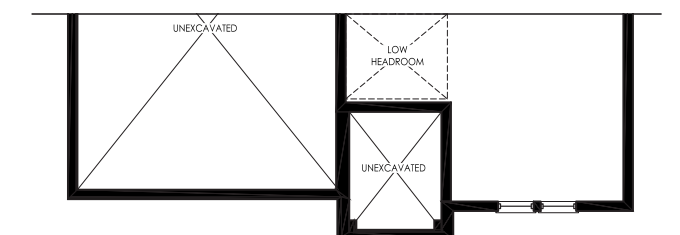
Elevation B  
Ground Floor



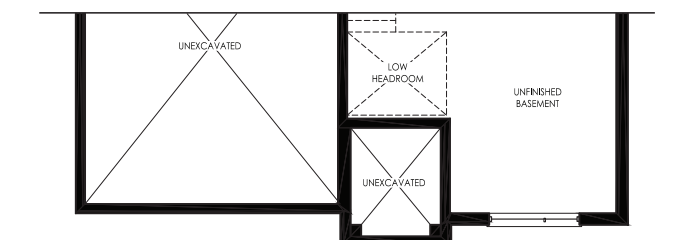
Elevation C  
Ground Floor



Elevation A  
Basement



Elevation B  
Basement



Elevation C  
Basement